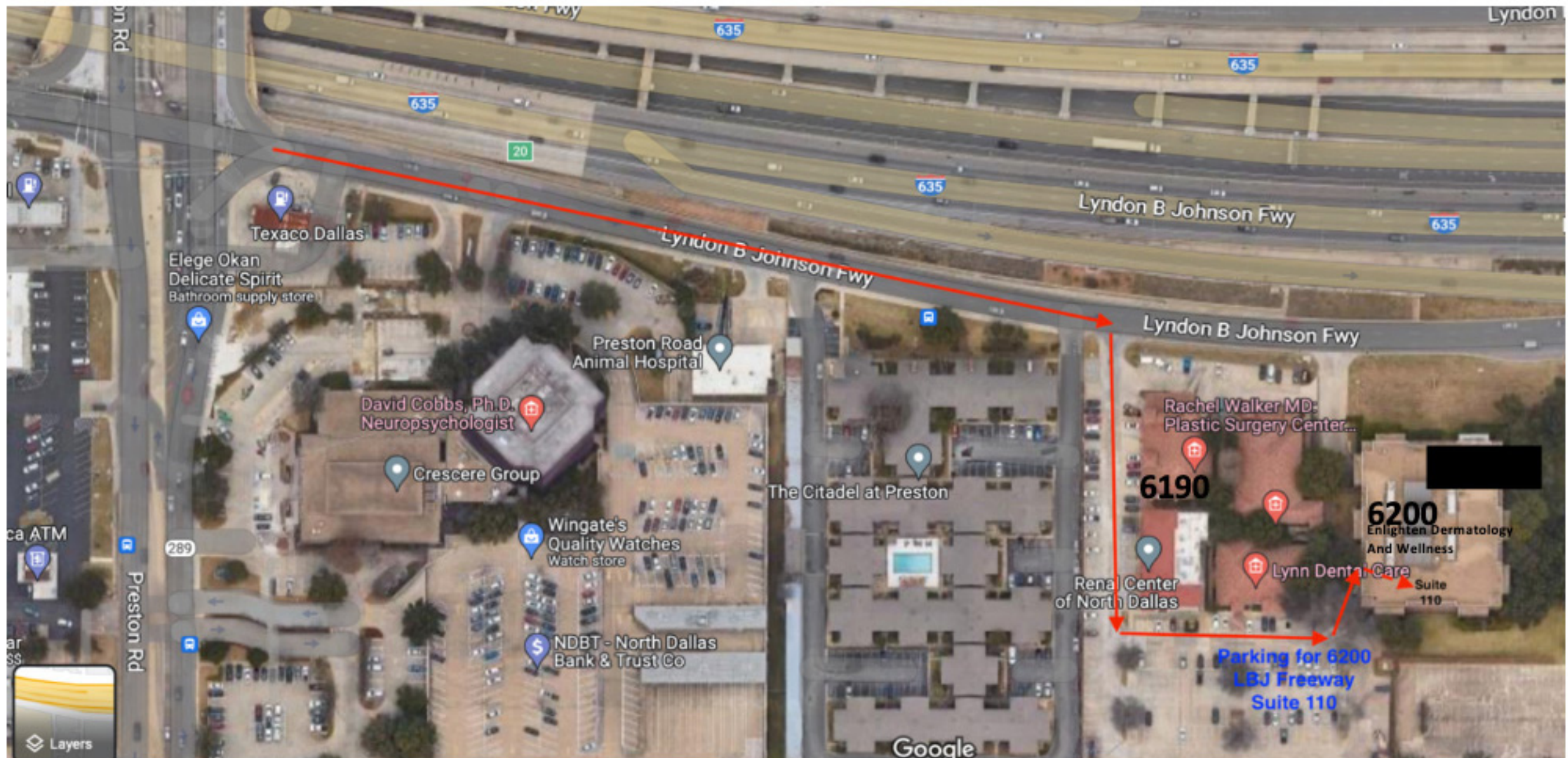


# Driving Directions



1. Even though your appointment is at 6200 LBJ Freeway, **set your GPS to 6190 LBJ Freeway.**
2. Exit Preston off of Hwy 635.
3. Proceed east on frontage road to 6190 LBJ Freeway (If you go to 6200 you will have gone too far).
4. Turn right off of frontage road and proceed to the rear of the building.
5. Turn left into the parking lot and proceed to the far east end. You will then be at the back corner of the 6200 building.
6. There is a side entrance which you will walk thru with a large lobby.
7. As you enter the lobby you will walk towards your right around the winding stair case.
8. Once you get past the winding staircase Enlighten Dermatology and Wellness, Suite 110, will be to your right.